

How to Refer.....

York Region Preschool Speech and Language Program

York Region: 1-888-703-KIDS (5437)

Tri-Regional Infant Hearing Program

York Region: 1-888-703-KIDS (5437)

Durham Region: 905-728-1673 or
1-800-304-6180 ext. 2341

Haliburton, Kawartha, and Pine
Ridge: 705-748-2337 ext. 457 or
1-888-779-9916

Tri-Regional Blind Low-Vision Early Intervention Program

York Region, Durham Region,
Haliburton, Kawartha and Pine Ridge:
1-888-703-KIDS (5437)

If in doubt, check it out!



Markham Stouffville Hospital
Child Development Programs
are funded by
the Ministry of Children and Youth Services.



Child Development Programs

Tri-Regional Infant Hearing Program

Tri-Regional Blind Low-Vision Early Intervention Program

York Region Preschool Speech and Language Program



York Region Preschool Speech and Language Program

This program is committed to prevention, early identification and intervention with regards to speech and language difficulties. Assessments and a range of intervention strategies are provided to children and their families to support the development of communication and social skills.

Who should be referred?

If you live in York Region and have concerns about your child's speech and language skills, please contact us. Services are free and a doctor's referral is not required.

What does the program offer?

Assessment

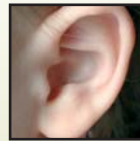
Intervention which may consist of:

- Parent Workshops
- Parent Coaching
- Group/Paired Therapy
- Consultations (home/child care)

Education workshops for child care staff

Transition planning with the York Region School Boards

Partnering with other service providers or community agencies involved with the child and family.



Tri-Regional Infant Hearing Program

This program identifies children with permanent hearing loss and provides the follow-up services/ supports to facilitate language and literacy development as needed until school entry.

Who should be referred?

Babies who have missed their newborn screening or have a risk factor for permanent childhood hearing impairment should be referred.

What does the program offer?

Monitoring program for babies who are at risk for hearing loss (e.g. low birth rate.)

Audiology services by audiologists who are trained with the Provincial Infant Hearing Program.

Family Support services by social workers who can provide counselling support and community information.

Communication Development services including spoken language (oral), manual language (sign language) or a combination of both.



Tri-Regional Blind Low-Vision Early Intervention Program

This program builds on the existing resources in our community. Partnerships have been developed with CNIB, the Ontario Foundation for Visually Impaired Children, infant development and early intervention services as well as a network of paediatric ophthalmologists, optometrists, and physicians across the regions.

Who should be referred?

If you live in the region and have concerns about your child's vision please contact us. An ophthalmologist's referral is needed prior to admission, however we can assist in this referral and provide supports in the meantime.

What does the program offer?

Family Support services including grief counselling, assisting with coping and family adjustments, service coordination and access to resources.

Early Intervention Services by Early Childhood Vision Consultants. Families will be given coaching and experience in daily living activities to enhance their child's development.